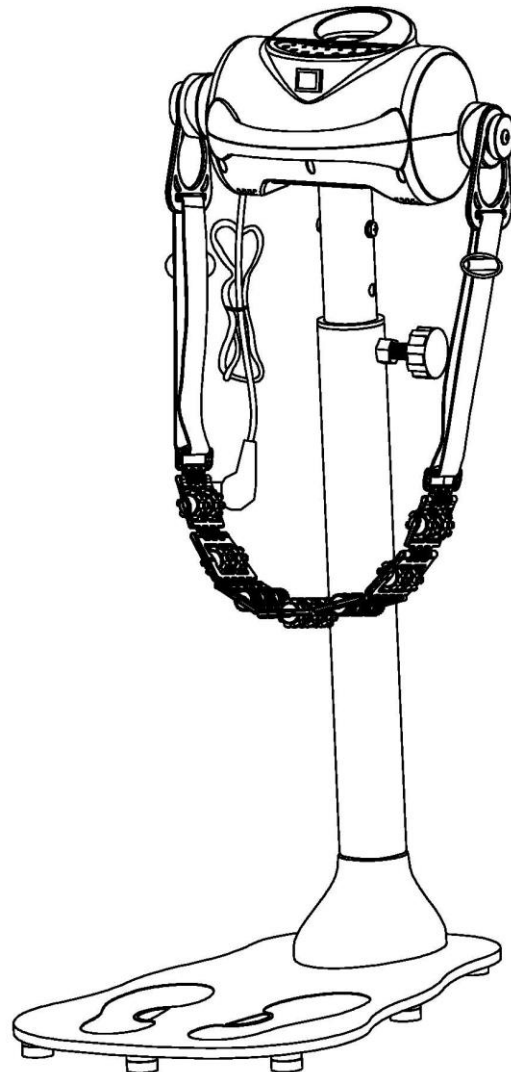




USER MANUAL – EN
IN 7450 Massager inSPORTline Rexabelt



OBSAH

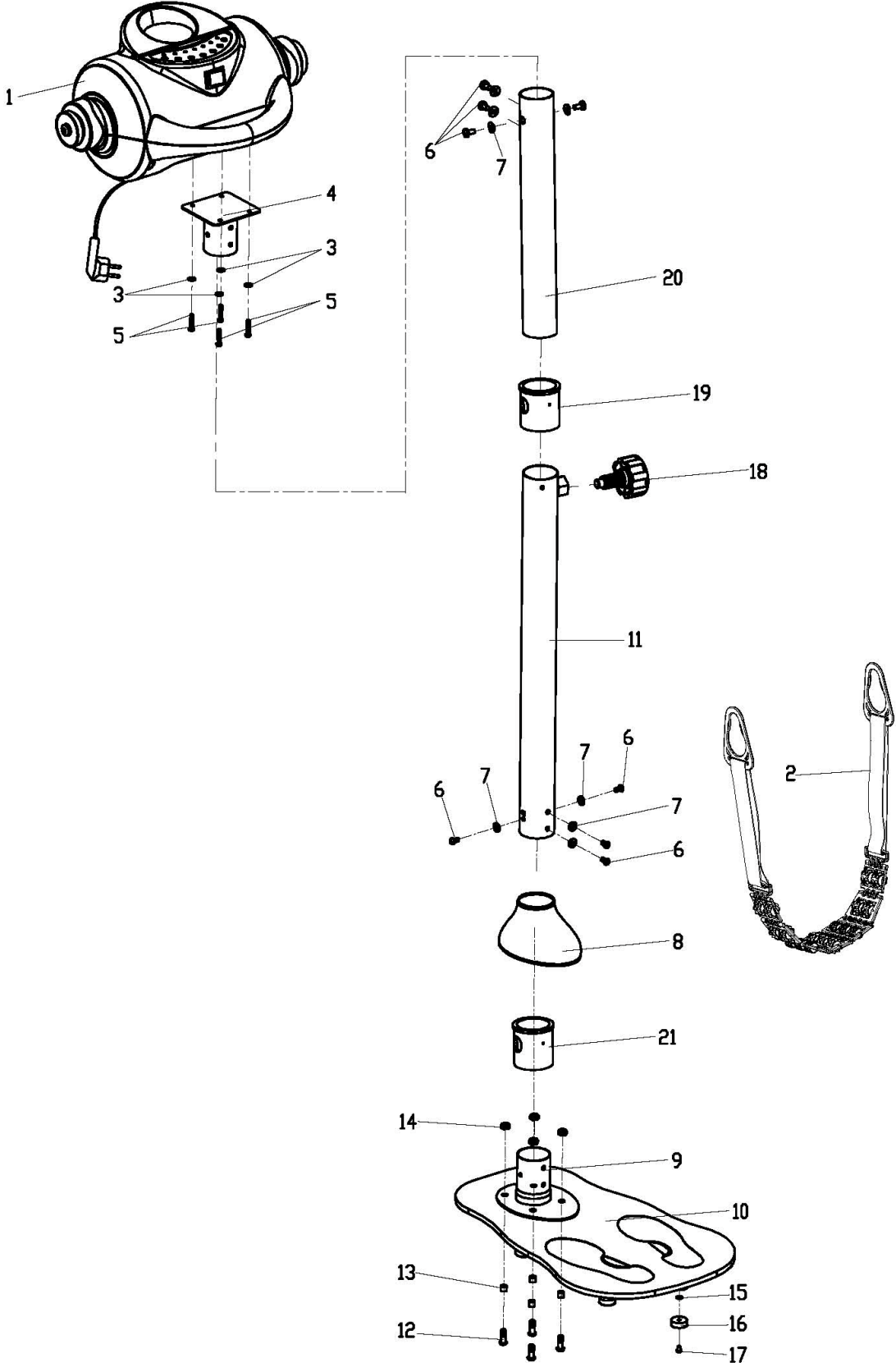
PRECAUTIONS..... 3
EXPLODED VIEW 4
PARTS LIST 5
ASSEMBLY INSTRUCTIONS 6
CORRECT BODY ALIGNMENT..... 8
OPERATING INSTRUCTIONS 9
TERMS AND CONDITIONS OF WARRANTY, WARRANTY CLAIMS..... 9

PRECAUTIONS

- 1) Read all the instructions in this manual and do warm up exercises before using this equipment.
- 2) This equipment is home stationary fitness equipment, and also aerobic training equipment that can help you to develop your cardiovascular function.
- 3) Please make sure all parts are not damaged and fixed well before use. The equipment should be placed on a flat surface when using. Using a carpet or other covering material on the ground is recommended.
- 4) Please wear proper clothes and shoes when using the massager; do not wear clothes that might catch any part of the equipment.
- 5) Consult your physician and make a suitable exercise schedule before exercise. This is particularly important to people who are over 35 years old or who have prior medical history. In order to attain the ideal exercise result, besides executing a suitable amount of exercise, it is also very important to insist on doing exercise every day.
- 6) In order to avoid muscle injuries, you should perform full body warm-up exercises before using the massage device. After the massage, the relaxation of the body is suggested for cool-down.
- 7) Keep children and pets away from the equipment while operating the equipment. This machine is designed for adults only. The minimum free space required for safe operation is not less than two meters.
- 8) Do not use this equipment one hour before or after dinner.
- 9) If you feel any chest pains, nausea, dizziness, or short of breath, you should stop exercising immediately and consult your physician before continuing.
- 10) The maximum weight capacity of the user is 100kgs.
- 11) Class - H (according to EN ISO 20957) for home use.

Warning: It will be harmful if you disobey the above-mentioned precautions.

EXPLODED VIEW

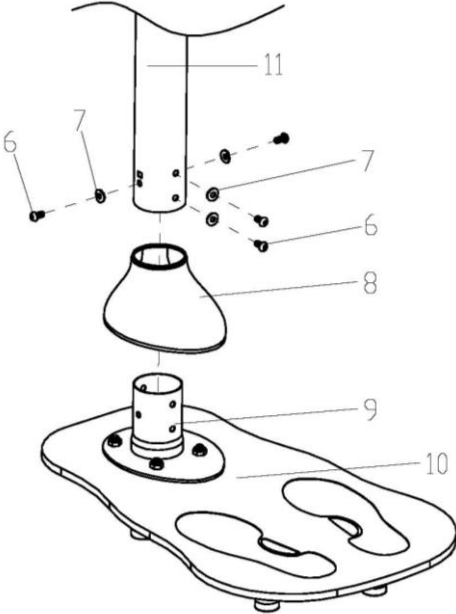


PARTS LIST

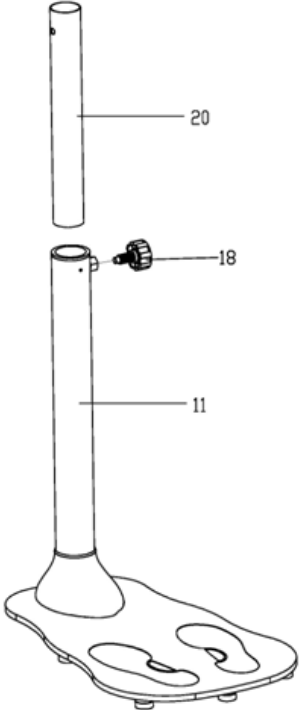
Parts No.	Description	Quantity
1	Vibration motor	1
2	Massage belt	1
3	Flat washer D6×φ16×1.2	4
4	Massage plate	1
5	Cross pan bolt M6×35	4
6	Cross pan bolt M8×16	8
7	Arc washer d8×φ19×1.5 R38	8
8	Cover	1
9	Upright tube plate	1
10	Glass board	1
11	Under upright tube	1
12	Hex bolt M10×30	4
13	Plastic spacer bush	4
14	Nylon nut M10	4
15	Flat washer D6×φ13×1	7
16	Cushion	7
17	Cross pan bolt M6×10	7
18	Pop-pin knob	1
19	Upright bushing 1	1
20	Upper upright tube	1
21	Upright bushing 2	1

ASSEMBLY INSTRUCTIONS

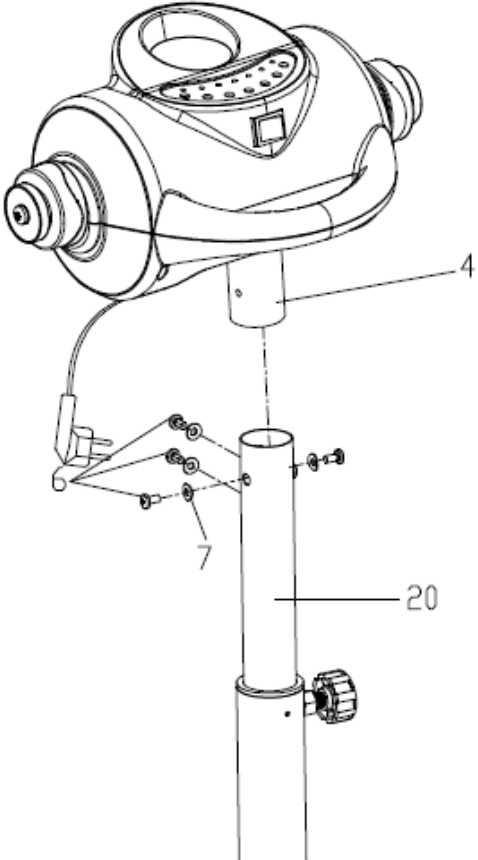
STEP 1: Put the cover (8) on the upright tube (11). Then lock the under upright tube (11) to the upright tube plate (9) with hex bolts (6) and arc washers (7), and then put the cover (8) on it.



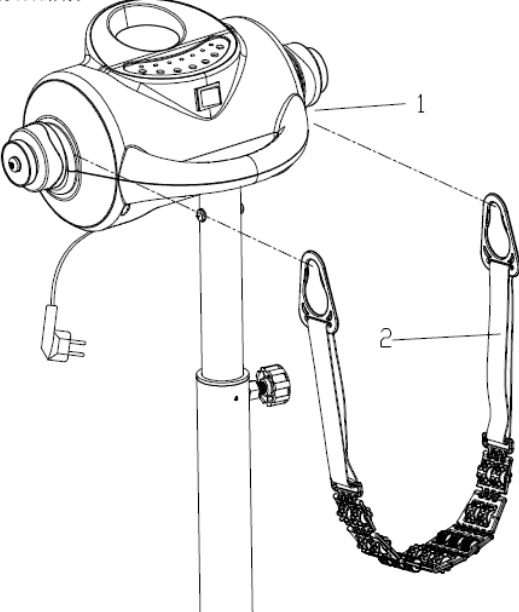
STEP 2: Insert the upper upright tube (20) into the under upright tube (11), secured with the pop-pin knob (18) at a proper height as shown.



STEP 3: Insert the massage plate (4) which has already installed the motor (1) into the upper upright tube (20), and then attach the massage plate (4) to the upright tube (20) with hex bolts (6) and arc washers (7)



STEP 4: Put the belt (2) on the two sides of the motor (1).







This is the final Assembly Instruction. Make sure you have finished all these steps successfully. May you have a wonderful exercise trip!

WARNING:

- A. Assembly is ready. Please be noted that the unit only can keep on working for 20 minutes, and then it should be powered off at least for half an hour, i.e. it only can work again after it's powered off for half an hour. Be sure the unit is powered off if it isn't in working condition.
- B. It is not allowed to take the motor apart, because the motor is high tension.

CORRECT BODY ALIGNMENT

 <p>1. Massaging to firm the belly.</p>	 <p>2. Massage for back muscle toning and relief of strain.</p>
 <p>3. Massage on the waist.</p>	 <p>4. Work on the thighs.</p>

OPERATING INSTRUCTIONS

1. Plug the adapter into AC 220V/50Hz alternating current power socket.
2. For hanging the massage belt the device is equipped with two vibration heads. The massage belt is strengthened to provide an optimum support of the massaged area. You can regulate the intensity of the massage by changing the force with which you lean against the belt.
3. Start/stop the machine by pressing the main switch.
4. The product is recommended for people who are 16-70 years old and for everyone who does not suffer from health problems that prohibit the use of this type of massage device. The massage is relaxing and can release muscle tension e.g. after long work in the office or intensive sport activity. It also helps in the treatment of obesity and a regular use reduces the effects of stress on your body.
5. The device is suitable for everyone interested in active and healthy lifestyle.
6. IMPORTANT:
 - Do not use the machine if you are in bed health, if you have bone problems or if you are recovering from an operation or serious injury and in case you are a pregnant woman. Children should use the product only under adult supervision. Old people should take care of their safety. Please do not take the massage at least half an hour after a meal.
 - The machine should not be turned on continuously for more than 30 minutes.
 - Especially new users of the equipment may have the feeling of burning or itching of skin – it is normal, the reason is an increased blood circulation in the massaged area.
 - You can increase the positive effects of the massage by maintaining an adequate water intake.

TERMS AND CONDITIONS OF WARRANTY, WARRANTY CLAIMS

General Conditions of Warranty and Definition of Terms

All Warranty Conditions stated hereunder determine Warranty Coverage and Warranty Claim Procedure. Conditions of Warranty and Warranty Claims are governed by Act No. 40/1964 Coll. Civil Code, Act No. 513/1991 Coll., Commercial Code, and Act No. 634/1992 Coll., Consumer Protection Act, as amended, also in cases that are not specified by these Warranty rules.

The seller is SEVEN SPORT s.r.o. with its registered office in Borivojova Street 35/878, Prague 13000, Company Registration Number: 26847264, registered in the Trade Register at Regional Court in Prague, Section C, Insert No. 116888.

According to valid legal regulations it depends whether the Buyer is the End Customer or not.

“The Buyer who is the End Customer” or simply the “End Customer” is the legal entity that does not conclude and execute the Contract in order to run or promote his own trade or business activities.

“The Buyer who is not the End Customer” is a Businessman that buys Goods or uses services for the purpose of using the Goods or services for his own business activities. The Buyer conforms to the General Purchase Agreement and business conditions to the extent specified in the Commercial Code.

These Conditions of Warranty and Warranty Claims are an integral part of every Purchase Agreement made between the Seller and the Buyer. All Warranty Conditions are valid and binding, unless otherwise specified in the Purchase Agreement, in the Amendment to this Contract or in another written agreement.

Warranty Conditions

Warranty Period

The Seller provides the Buyer a 24 months Warranty for Goods Quality, unless otherwise specified in the Certificate of Warranty, Invoice, Bill of Delivery or other documents related to the Goods. The legal warranty period provided to the Consumer is not affected.

By the Warranty for Goods Quality, the Seller guarantees that the delivered Goods shall be, for a certain period of time, suitable for regular or contracted use, and that the Goods shall maintain its regular or contracted features.

The Warranty does not cover defects resulting from:

User's fault, i.e. product damage caused by unqualified repair work, improper assembly, insufficient insertion of seat post into frame, insufficient tightening of pedals and cranks

Improper maintenance

Mechanical damages

Regular use (e.g. wearing out of rubber and plastic parts, joints etc.)

Unavoidable event, natural disaster

Adjustments made by unqualified person

Improper maintenance, improper placement, damages caused by low or high temperature, water, inappropriate pressure, shocks, intentional changes in design or construction etc.

Warranty Claim Procedure

The Buyer is obliged to check the Goods delivered by the Seller immediately after taking the responsibility for the Goods and its damages, i.e. immediately after its delivery. The Buyer must check the Goods so that he discovers all the defects that can be discovered by such check.

When making a Warranty Claim the Buyer is obliged, on request of the Seller, to prove the purchase and validity of the claim by the Invoice or Bill of Delivery that includes the product's serial number, or eventually by the documents without the serial number. If the Buyer does not prove the validity of the Warranty Claim by these documents, the Seller has the right to reject the Warranty Claim.

If the Buyer gives notice of a defect that is not covered by the Warranty (e.g. in the case that the Warranty Conditions were not fulfilled or in the case of reporting the defect by mistake etc.), the Seller is eligible to require a compensation for all the costs arising from the repair. The cost shall be calculated according to the valid price list of services and transport costs.

If the Seller finds out (by testing) that the product is not damaged, the Warranty Claim is not accepted. The Seller reserves the right to claim a compensation for costs arising from the false Warranty Claim.

In case the Buyer makes a claim about the Goods that is legally covered by the Warranty provided by the Seller, the Seller shall fix the reported defects by means of repair or by the exchange of the damaged part or product for a new one. Based on the agreement of the Buyer, the Seller has the right to exchange the defected Goods for a fully compatible Goods of the same or better technical characteristics. The Seller is entitled to choose the form of the Warranty Claim Procedures described in this paragraph.

The Seller shall settle the Warranty Claim within 30 days after the delivery of the defective Goods, unless a longer period has been agreed upon. The day when the repaired or exchanged Goods is handed over to the Buyer is considered to be the day of the Warranty Claim settlement. When the Seller is not able to settle the Warranty Claim within the agreed period due to the specific nature of the Goods defect, he and the Buyer shall make an agreement about an alternative solution. In case such agreement is not made, the Seller is obliged to provide the Buyer with a financial compensation in the form of a refund.

**SEVEN SPORT s.r.o.**

Sídlo: Bořivojova 35/878, 130 00, Praha 3, ČR
Centrála: Dělnická 957, 749 01 Vítkov
Reklamace a servis: Čermenská 486, 749 01 Vítkov

IČO: 26847264
DIČ: CZ26847264
Telefon: +420 556 300 970
Mail: eshop@insportline.cz
reklamace@insportline.cz
servis@insportline.cz
Web: www.insportline.cz

SK**inSPORTline s.r.o.**

Centrála, reklamácie, servis: Električná 6471, 911 01 Trenčín, SK

IČO: 36311723
DIČ: SK2020177082
Telefón: +421(0)326 526 701
Mail: objednavky@insportline.sk
reklamacie@insportline.sk
servis@insportline.sk
Web: www.insportline.sk

Date of Sale:

Stamp and Signature of Seller: